

Kingston Chess Club Newsletter

Volume 3, Issue 21 November 1999

Editorial

The nights are getting longer – the chess season has started! However, for some, the chess seasons never end. Kingston Chess club runs a varied programme from May to September: the Club Championship, a handicap rapidplay, lectures, consultation matches, a workshop and a simultaneous display. What more could you want? Do let us know.

Don't be shy

Your captains need you. Please let them know what fixtures you are available to play. And if you consider yourself only as a second or third team player – you are not. As Winnie the Pooh should have said “you are stronger than you think”. A number of our so called stronger players are unavailable due to work or other commitments.

A big thank you

To Derek Coope for captaining the 2nd Teams during the 1990s. It has taken 2 players with a combined grade of over 300 to replace him. Neil Maxwell will run the Thames Valley B team and your editor will try to get the Surrey 2nd team out of the Ellam Trophy (but hopefully not down to the 4th Division).

The pundits predict

That time of year again. Hopefully our 1st teams can stay in the Premier Leagues. But we will need to win the 6 pointers (O.K only 2 pointers here) to avoid the yo-yo effect. Let's hope both the Chris's manage like Peter Reid rather than Turnip Taylor.

As for Derek's replacements what can we say? They are going to learn the hard way that if their nominated players are not available there is a fair chance that the third team players are committed elsewhere that week. Outside chances of promotion only.

The third, and by no means last, teams are Ron Manager's tips for promotion. Come on lads!

But as you all know the K's are a cup side. We play brilliantly one week and like lemons the next. A first round bye in the Alexander Cup is a good start. But what about the Thames Valley -- knocking out the giants of Pinner!

Contents

- **Fixture List**
Fill in your diaries now
- **This season's Squad Numbers**
Has your grade gone up or down?
- **Red Hot Opening Theory**
Spicing up your Chigorin
- **Taking on the World**
Chris Briscoe simultaneous
- **Where did we go wrong?**
Workshop discussions
- **Games from our members**
Felce Cup and “Anonymous”
- **Waiting for the Fat Lady**
A swindling start to the season

Congratulations

To Matthew Baker on his first IM norm. Well, actually, it's “I'm busy changing nappies and not sleeping much anymore -- there's no way I can play chess”. Best wishes to all 3 of you.

Welcome

To Bob Collins who has started to play for us.

Grading

Not what you expected? Never mind your good (or bad) results in the Thames Valley Leagues will be reflected in your next grading.

Notices

Any part of this newsletter may be reproduced, stored in a retrieval system, or a bin, because, quite frankly, we could do with the publicity.

Kingston Chess Club meets at 7.30 p.m. every Monday except Bank Holidays at the Quaker Meeting House in Eden Street. For more details contact the Club Secretary, Jim Wilson on 0181 399 7563.

Nick Grey (Editor) can be contacted on 0181 942 8948 or at 5 Mount Pleasant Road, New Malden, Surrey, KT3 3JZ, except for Monday nights when he is at the Club, or playing away.

KINGSTON CHESS CLUB
FIXTURES 1999-2000

	Home	Away
Mon 04.10		B v Hayes B (TV3) <i>cancelled</i>
Thu 07.10		Richmond (Lauder Trophy) <i>cancelled</i>
Mon 11.10	B v Staines A (TV3)	
Mon 18.10	C v Maidenhead B (TV4)	2 v Hampton (ER)
Tue 19.10		A v Surbiton A
Wed 20.10		2 v Streatham 3 (ET)
Mon 25.10	A v Pinner (TV KO Rd 2)	C v Hounslow B (TV4)
Thu 28.10		3 v Sutton 5 (CT)
Mon 01.11	B v Richmond C (TV3)	C v Maidenhead B (TV4)
Thu 04.11	2 v Wimbledon 2 (ET)	
Mon 08.11	A v Ealing A (TV1)	
	C v Richmond Juniors C (TV 4)	
Mon 15.11	3 v Wimbledon 4 (CT)	1 v Redhill (ST)
Thu 18.11		A v Hayes A (TV1)
Fri 19.11		B v Richmond Juniors B (TV3)
Mon 22.11	1 v Coulsdon 1 (ST)	C v Wimbledon B (TV4)
	2 v Crystal Palace (ET) <i>Moved to 21.2.2000</i>	
Mon 29.11	A v Wimbledon A (TV1)	C Meadhurst (TV4)
Thu 02.12	B v Ealing B (TV3)	
Mon 06.12	3 v Guildford 3 (CT)	B v Hampton (TV3)
Thu 09.12		1 v Battersea (Alex. Cup) <i>Now Wed. 8.12</i>
Mon 13.12	A v Pinner (TV1)	3 v Coulsdon 6 (CT)
Mon 20.12	A v Slough A (TV1)	2 v Coulsdon 4 (ET)
Mon 10.01	C v Wimbledon C (TV4)	1 v Coulsdon 2 (ST)
Thu 13.01		A v Richmond A (TV1)
Mon 17.01	B v Harrow B (TV3)	
Tue 18.01		Ashted 4 v 3 (CT)
Mon 24.01	B v Hayes B (TV3)	
Thu 27.01		Guildford 1 v 1 (ST)
Mon 31.01		B v Staines A (TV3)
Thu 03.02	1 v Surbiton (ST)	
Fri 04.02		Richmond Juniors C v C (TV4)
Mon 07.02	3 v Ashted 3 (CT)	Crystal Palace 1 v 1 (ST) <i>B v Hayes B (TV3)</i>
Tue 08.02		Maidenhead B v C (TV4)
Mon 14.02	A v Surbiton A (TV1)	
	2 v Dorking (ET)	
Mon 21.02	3 v Woking (CT) + 2 v Crystal Palace (ET)	
Tue 22.02		Streatham 1 v 1 (ST)
Thu 24.02		Richmond C v B (TV3)
Mon 28.02	C v Hounslow B (TV3)	
Thu 02.03	1 v Guildford 2 (ST)	
Mon 06.03	C v Meadhurst (TV4)	
	2 v S. Norwood 2 (ET)	
Mon 13.03	B v Hampton (TV3)	
Tue 14.03		Slough A v A (TV1)
Thu 16.3		Harrow B v B (TV3)
Mon 20.03	3 v Coulsdon 5 (CT)	Wimbledon A v A (TV1)
Mon 27.03	C v Wimbledon B (TV4)	
	A v Hayes A (TV1)	
Thu 30.03		Ealing B v B (TV3)
Mon 03.04	A v Richmond A (TV1)	Wimbledon 3 v 3 (CT)
Thu 6.04	2 v Ashted 2 (ET)	
Mon 10.04	1 v S. Norwood 1 (ST)	C v Wimbledon C (TV4)
Wed 12.04		Pinner v A (TV1)
Mon 17.04	B v Richmond Jun. B (TV3)	
Thu 20.04		Ealing A v A (TV1)
Tue 25.04		Surbiton 2 v 2 (ET)

This Seasons Squad Numbers

The Grading List is the first wholly computerised list. Some games haven't been graded for the purposes of this list (like Thames Valley), but never mind, that's probably for the best!

Squad Number	Name	Official Grade	Unofficial Master *
1	Tony Cullen	189	
2	Bryan Whyte	178	
3	Chris Briscoe	172	
4	Peter Roche	174	
5	Chris Carr	166	
6	Chris Wright	164	
7	Ken Inwood	161	
8	Julian Way	----	213
9	Chris Clegg	159	
10	Nick Grey	156	
11	Mike Sheehan	154	
12	Chris Mann	149	
14	Paul Gibbons	148	
15	Neil Maxwell	146	
16	Kevin Denyer	144	
17	John Springall	143	
18	Matthew Baker	----	141
19	Paul Lonergan	----	136
20	RW Gleave	129	
21	Mark Wellham	129	
22	John Grant	127	
23	David Shalom	123	
24	Tim Quelch	119	
25	Bob Collins	119	
26	Derek Coope	118	
27	Charles Ison	117	
28	Bill Waterton	112	
29	Kevin Galligan	102	
30	Bob White	97	
31	George Phillips	89	
32	Jim Wilson	86	
33	Mark Steedman	----	72
34	Cyril Merrett	32	

Red Hot Opening Theory – Ruy Lopez Chigorin

□ Nigel Short
 ■ Mark Hebden

Monarch Assurance – Isle of Man (7)

This Red Hot Opening Theory game was played with Nigel Short on 5½ / 6 a whole point ahead of Hebden and some other Grandmasters.

1.e4 e5 2.Nf3 Nc6 3.Bb5 a6 4.Ba4 Nf6 5.O-O Be7 (5...b5 6.Bb3 Bc5 the Moller Defence is popular at the top level and in club chess and is threatening to become black's main response against the Ruy – perhaps someone will write an article for us. The Arkhangelsk 6...Bb7 was similarly in vogue in the early 1990s).

6.Re1 b5 7.Bb3 O-O 8. c3 d6 9.h3 Na5 the Chigorin is an ancient line compared to others just mentioned. The Zaitsev (9...Bb7) has been the battlefield for the top players during the past 15 years and prior to that the Breyer (9...Nb8). Mark Hebden is one of our top players who regularly try the old main line).

10.Bc2 c5 11.d4 Re8 !? RED HOT!

This is a stunning move if you have never seen it before. I have certainly never played against it. This Hebden speciality is ideal for a must win situation. Nigel would have been prepared as Hebden has played it against him before although he declined the sacrifice previously.

(11...Qc7 12.Nbd2 cxd4 13.cxd4 is the main line although 11..Nd7/...Bb7/...Nc6 and 11...cxd4 are other options – although not played all at once)!

12.dxe5 (the sacrifice can be declined by 12.Nbd2 Bf8 13.Nf1 cxd4 14.cxd4 exd4 15.Nxd4 Bb7 16.Ng3 Rc8 as in Kotronias-Romanishin, Tilburg 1994).

12...dxe5 13.Ne5 Bb7 (13...Bd6 was met by 14.Nxf7 Kxf7 15.e5 Qe7 16.Bf4 Bc7 17.Re3 and white was better and won in Sax-Hebden, 1993).

14.Qf3 Bf8 15.Bf4 Re6 16.Ng4 Nc4 17.Nf6+ Rf6 18.Bg5 Rf3 (Black has got to go for it).

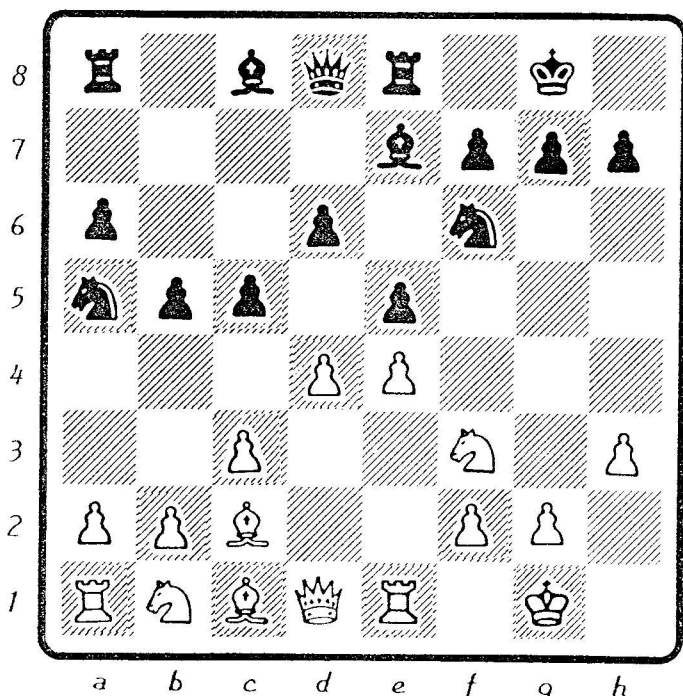
19.Bd8 Rd8 20.gf3 Nb2 21.a4 b4 22.Ra2 Nc4 23.Rd1 Re8 24.cb4 cb4 25.Nd2? (25.Bb3 Ne5 26.Kg2 keeps us going).

25...Ne5 26.Bb3 Rd8 27.Kg2 Rd3 28.Bc2 Rc3 29.Bb1 Bc6 30. Nf1? (this is really inexplicable, maybe Short is in time trouble – 30.a5 is O.K. Hebden regains the pawn and maintains an active position).

30...Nf3 31.Ne3 b3 32.Rb2 Nh4+ 33.Kg3 g5 34.Kg4 (the king is cut off here and is walking into a mating net).

34...h6 35.Rd8 Kg7 36.Rbd2 Bc5 37.Bd3 Be3 38.fe3 Ba4 39.e5 Bc6 40.Rf2 a5 41.e6 fe6 42e4 Ng6 O-1

(Nigel never recovered and finished on 6/9).



Taking on the World – Chris Briscoe Simul

So Gazza finally beat the World in the biggest interactive chess game ever. However, a popular event at our Chess Club this summer was the Simultaneous by Chris Briscoe on 12 July.

CB v Board

½-½	1	P.Roche (B)
0-1	2	K.Inwood (B)
½-½	3	B. Whyte (B)
1-0	4	J.Wilson (W)
1-0	5	W.Waterton (B)
1-0	6	C.Merrett (W)
1-0	7	CRA.Clegg (B)
1-0	8	J.Way (B)
½-½	9	I.Cross (B)

6½-2½

Second game

0-1 10 P.Roche (B)

Final score 6½-3½

This was a quite outstanding performance bearing in mind the strength of the opposition.

The second game is shown below and was played at Chris's suggestion as the first game with Peter was quite short.

□ Chris Briscoe
■ Peter Roche

1. e4	e6
2. d4	c5
3. Nf3	cd
4. Nd4	Nf6
5. Nc3	Nc6
6. Be2	a6
7. O-O	Qc7
8. Kh1	b5
9. a3	Bb7
10.f4	Nd4
11.Qd4	Bc5
12.Qd3	h5

13.Be3	Ng4
14.Nd1	g5
15.Qc3	Ne3
16.Qh8+	Ke7
17.Qh5	Nf1
18.Qg5+	f6
19.Qg7	Ke8
20.Qf6	Ng3+
21.hg	d6
22.Qe6+	Qe7
23.Qg8+	Kd7
24.Bg4	Kc7
25.Qg4	Rh8
26.Bh3	Rh3+

0 - 1

□ Chris Briscoe
■ Chris Clegg

1.e4 e6 2.d4 d5 3.Nd2 Nf6 4.e5 Nfd7 5.c3 c5 6.f4 Nc6 7.Ndf3 Qb6 8.g3 cd 9.cd Bb4+ 10.Kf2 O-O 11.Kg2 f6 12.Bd3 Kh8 13.Bb1 Rf7 14.h4 h5 15.h5 Bd7 16.a3 Be7 17.Bg6 Nd8 18.Bf7 Nf7 19.Nh3 Rc8 20.Nf2 Qd8

21.Bd2 Be8 22.Rc1 f5 23.Rc3 Kg8 24.Qc2 Rc6 25.b4 Kh8 26.g4 fg 27.Ng4 Bd7 28.Kg3 a6 29.Rc6 bc 30.Qd3 Qb6 31.Ng5 Nh6 32.Nh6 gh 33.Nf7+ Kg7 34.Nh6 Kh6 35.f5+ Kg7 36.f6+ Bf6 37.ef+ Kf6 38.Rf1+ Ke7 39.Bg5+ Ke8 40. Qf3 Qc7+ 41.Kg2 Qd6 42.Kh6 1-0

□ Chris Briscoe
■ Bryan Whyte

1.e4 d6 2.d4 Nf6 3.Nc3 e5 4.e5 e5 5.Qd8+ Kd8 6.Bg5 Be6 7.O-O-O Nd7 8.Nf3 Kc8 9.Bb5 c6 10.Ba4 Ng4 11.Rd2 f6 12.Bh4 Bb4 13.Bb3 Nc5 14.h3 Nb3+ 15.cb3 Nh6 16.Red1 Nf7 17.Ne1 Kc7 18.Nd3 Bc3 19.c3 Rd8 20.Nc5 Bc8 21.Bg3 Rd2 22.Rd2 Rd8 23.f4 Rd2 24.Kd2 ½-½

Where did we go wrong? – Workshop Discussions

□ V.Stanislav
■ Peter Roche

Rather coincidentally at our workshop Peter and Nick showed losses against the same opponent. Even more coincidentally we identified that our opponent was moving far too fast for our liking that we tended to copy him, and that he vigorously held onto the material that we both sacrificed.

1.d4 Nf6 2.c4 g6 3.Nc3 Bg7 4.e4 d6 5.f3

The Saemisch is difficult to counter as black does not get the usual kingside vs queenside counterplay.

5...O-O 6.Be3 c5 With this gambit white's centre disappears and black gets black square compensation. It has been played by the top players Shirov, Kramnik, Kasparov, Khalifman, and came to prominence with Gelfand's win in the 1989 Interzonal.

7.dxc5 dxc5 8.Qxd8+ (first) Rd8 9.Bxc5

It seems that it is all going white's way with Nd5 to come but...

9...Nc6 10.Rd1

Editor's notes: 10.Ba3 is considered the mainline with 10...a5 11.Rd1 Be6 (If 11...Rd1 then 12.Kd1! Nenashev-Nunn, Manila Olympiad 1992) 12.Nd5 Nb4! As in Kramnik-Shirov, Bundesliga 1992.

10...Rxd1 Ed. 10...Nd7 is worth considering as played in 1985 by a future World Champion – Arlandi-Khalifman, Groningen.

11.Nxd1 Nd7! Shirov's move which gives white no time to consolidate by Ne2-c3.

12.Ba3 a5 Black tries to conquer the queenside whilst white's kingside pieces are sleeping in their beds.

13.Bd3 Ed. We ignored this move at the time but it may be an improvement over the theory of this line 13.Ne3 is Razuvaev-Shirov, Bundesliga 1991. In that game white suffered from trying to defend the black squares, the weakness at a2, and develop his kingside. Our game continuation has assisted white in solving 2 of his 3 problems.

13...Nb4 14.Bb1 Nc5 Black has control of the black squares and has blocked in white's bishops.

15.Bxb4 axb4 White has a simple plan – exchange all the pieces and the extra pawn wins!

16.b3 f5 16...Bd7 and b5 may be a better option.

17.Ne2 fxe4 18.fxe4 b6 19.h4 Bb7 20.Nf2 Rd8 21.h5 g5 22.h6 Bd4 23.Nxd4 Rxd4 24.Rh5 Ne6 25.b3 Bc6 26.Ke2 Be8 27.Rh1 Rd6 28.e5 Rd8 29.Ke3 Bc6 30.Rd1 Rf8 31.Be4 Bxe4 32.Nxe4 g4 33.Rd7 Rf3+ 34.Kd2 Kf7 35.Ne6+Kf8 36.Nc8 Rxd3 37.Rxe7 Ng5 38.Ra7 Nf3+ 39.Ke3 Rh3 40.Kf4 Rxd6 41.Kxd4 Nd4 42.Rd7 Ne6 43.Nxb6 1-0

□ Chris Clegg
■ Marcus Osborne
Kensington Open 1999

1.e4 e6 2.d4 d5 3.Nd2 c5 4.ed Qd5 5.Ng3 cd4 6.Bc4 Qd6 7.O-O Nf6 8.Nb3 Nc6

Chris demonstrated that black cannot hold the pawn by 8...e5? Because 9.Nxe5 and if 9...Qxe5?? Then 10.Re1 wins.

9.Nbd4 Nd4 10.Nd4 a6 11.c3

11.Bb3 or 11.Re1 are alternatives. *Editor: 11c3 is usual after 10...Bd7 11.c3 Qc7 12.Qe2 Bd6 13.Nb5 as in Ivanchuk-Ehlvest, Manila Ol 1992.*

11...Qc7 12.Bd3?!

We may have identified this as the source of Chris's problems. 12.Bb3 is normal. The text move only makes sense if Black castles kingside – it becomes all too obvious for Black to attack the kingside and castle long.

12...Bd6 13.h3 Bd7 14.Qf3 O-O-O 15.Be3

We examined 15.Bg5 h6 but got nowhere.

15...e5 (ouch) 16.Nf5 Bc6 17.Qe2 Nd5 18.Nxd6+Rxe6

We spent some time trying to resolve Chris's problems by 18.Ba7 but again we struggled.

19.Rad1 Re8 20.Be4 f5

White has 2 bishops but black has the 2 pawns!

21.Be5 Nf4 22.Qc2 Nh3+ 23.Kh2 Rf6 24.b4 e4+ 25.g3 Rh6 26.Be3 f4 27.Bc1 Ng5 28.Kg2 f3+ 29.Kg1 Nh3+ 30.Kh2 Ng5 31.Kg1 Nh3+ 32.Kh2 e3 33.Bxe3 fxe3 34.Nf2+Kg1 35.Qh3 mate

Games from our Members

- ☐ **Derek Coope (118)**
☒ **Hugh Wylie (120 – Ashtead)**

I have been playing badly and had lost my last 3 games. However, sometimes your opponent plays worse.

1. c4 g6
 2. d4 Bg7
 3. e4 c6
 4. Nc3 heading for a Saemisch.
... e5?
 5. dxe5 Bxe5
 6. Bd2 Nf6?
- Now the bishop cannot retreat.
7. Nf3 Bc7
 8. Bg5 O-O? All of Black's pieces are nicely blocked in. 8...d6 must be played.

9. Qd4 Kg7
10. e5 Qe8? Re8 is better.
11. Bxf6+ Kg8
12. Qh4 h5 It's too early in the evening to resign!

Derek has read a new book by Mednis – "From the Opening into the Pub"!!!

13. Qg5 Kh7
14. Bd3 1-0

There is no answer to Qxh5+.
Sometimes all your pieces are on the right squares!

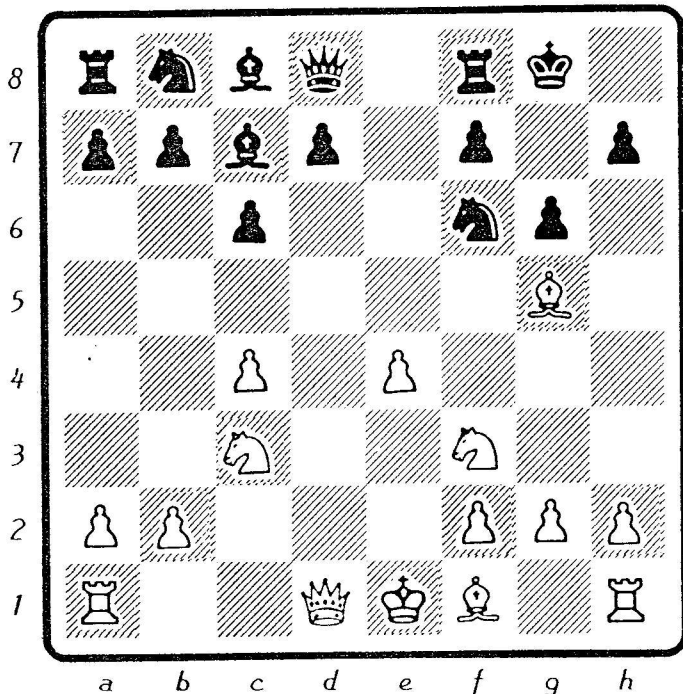
- ☐ **Anon**
☒ **Another**

Left down the club from the Championships I think.

- | | |
|-------------|--------------|
| 1. e4 d6 | 2.d4 Nf6 |
| 3. Nc3 g6 | 4.Be3 Bg7 |
| 5. Nf3 O-O | 6.Qd2 a6 |
| 7. Be2 Nbd7 | 8.O-O-O b5 |
| 9. a3 Bb7 | 10.Bd3 c5 |
| 11.d5 c4 | 12.Be2 Ng4 |
| 13.Bd4 Rc8 | 14.h3 Bh6 |
| 15.Ng5 f6 | 16.hg Bxg5 |
| 17.f4 Qa5 | 18.fg b4 |
| 19.ab Qxb4 | 20.Nb1 Qa4 |
| 21.Rh3 Nc5 | 22.Bxc5 Rxc5 |
| 23.Rdh1 Rf7 | 24.gf ef |
| 25.Qh6 Rb5 | 26.Qxg6+ Kf8 |
| 27.Rxh7 | |

Here is the \$64,000 question. Can you name both players?

A prize for the winner!!!



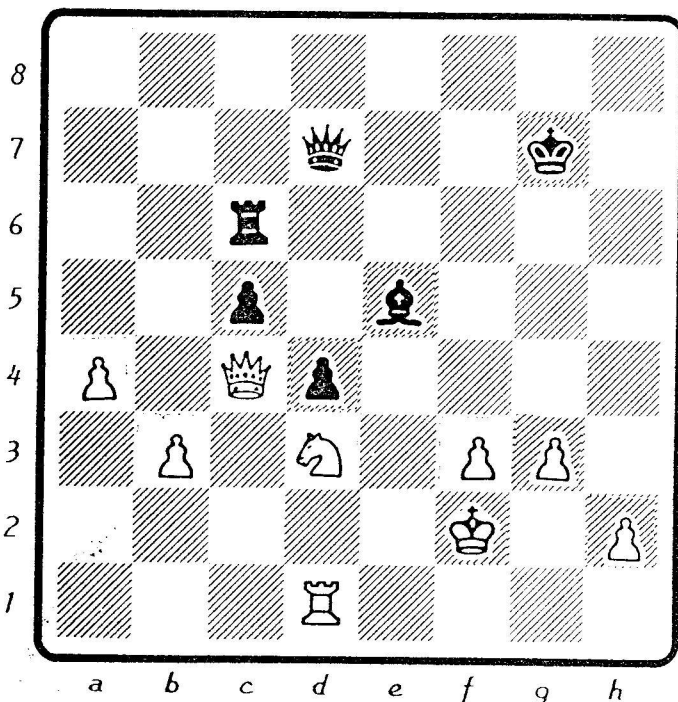
Waiting for the Fat Lady

This page will be used for swindles, blunders, or references to chess in the media. Your contributions will be appreciated for future issues. In the meantime I will present my humble effort from the start of the season.

The Hollywood blockbuster "Independence Day" had loads of chess references with the aliens using our satellites to countdown to "checkmate". In KCCN we have already used the computer virus plot in our game versus Kasparov and Deep Blue III. This month we will see that like Will Smith your correspondent is obsessed with "the Fat Lady".

□ M.Broad (139)
■ N.Grey (156)

The position is rather desperate as can be seen below:



It's my 35th move in a London Commercial League Cup game. This is my last move before the time control. My opponent has been in time trouble but has made the control. He visible relaxes. It's time to count the pieces and pawns and send this off to adjudication. There is no need to I would not normally waste the adjudicators time. However there is one more point to bear in mind. The match position is close we certainly need at least a draw. What move would you play?

The trouble with a good swindle is that you will only find the chances if you accept that you are lost. You will then find all sorts of outrageous moves that you would normally reject for materialistic reasons.

I have been moving quickly for the last few moves for one reason only. I've accepted that I am lost if it goes to adjudication. Like in the Surrey Leagues there is one more chance until the fat lady sings. If there is enough time in a 2½ hour session you can force your opponent to make another 7 moves in 15 minutes. There are 20 minutes of the session left and I have noticed that my opponent's flag is hanging.

35...Qh3!

I put a ring around move 42 of my scoresheet and hand it to my opponent, who is their team captain, to reconstruct his scoresheet. I then put the clocks back 15 minutes. He reminds me that it will be time at 9.45. I'll just wait for the fat lady!

36.Nxe5 After a great deal of thought he plays the best move. He is obviously worried by the checks, and may have even seen that 36.Kg1? loses to...Bxg3. He now has a knight and 3 pawns advantage and threatens a check on Qf7.

36...Qxh2+ 37.Kf1 Qh3+ 38.Ke2 Re6!

The position is still lost for me. But this is the only move to create a threat – pinning the knight.

39.Qd5? He was worried that 39.f4 opened another diagonal. But this move has left c2 undefended.

39...Qf5 40.Kf2? A time trouble blunder 40.f4 defending the knight must be played.

40...Rxe5 41.Qb7+ Kg6 42.Re1?? (FLAG HANGING) 42...Qc2+ (FAT LADY!!).

He calls times and writes down the position for adjudication, pointing out his 2 extra pawns. As everyone else gathers around the board I point out that the adjudicator should spot my win as 43.Kf1 Qd3+ 44.Kf2 and Qd2 mates. If instead 44.Kg2 then not 44...Rxe1 but 44...Qd2+45Kh3 Rh5+ 46.Kg4 Qg5 mate.

When the clock is counting down to zero and the aliens are swarming all over you do not give up! Like Teddy, Ollie and Lothar Matteus know – it's not over until the fat lady sings!