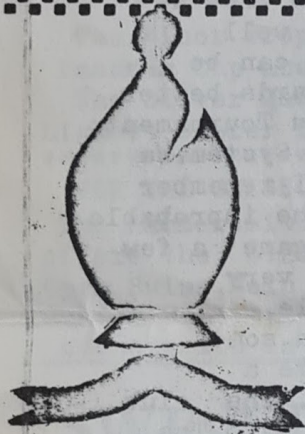


KINGSTON GAMBIT

The Magazine of The Kingston & Thames Valley
Chess Club

No. 1 February 1973



WHY NOT THE
LEAGUE?



The Kingston A team, after an indifferent start to the season, is well placed to win the Thames Valley League Championship. It is the first time since we were promoted to Division 1 that the team has produced really good results. With five wins and a draw from eight games plus a probable win against Acton, we can look forward to a fruitful season.

The lengthy process of Adjudication is obscuring the Club's performance in all competitions. In one match, against Chertsey, the Captain agreed a draw and a loss rather than wait months for results, although we might have made $1\frac{1}{2}$ points.

John Nunn and Mike Lally have played in a few matches. Despite the absence of these strong players, the top boards have not been outclassed. On board 1 Chris Clegg is always good for a draw and on the rare occasion, even more.

Printed and Published by Kingston & Thames Valley Chess Club, 25 London Road, Kingston, Surrey.

club grading list

J.M.D.Nunn- 215, M.E.Lally-182,
C.Clegg-181, D.J.Stone- 177,
K.Inwood-177, M.Sheehan-169,
D.Rowson-167, J.Pattle-164.

cup year

The B and C teams are trying to make it a great Cup Year for Kingston.

In the First section of the Minor Trophy the B team is leading with 5/6. The C team in the lower section also lead, with $5\frac{1}{2}/7$.

ON OTHER PAGES

PAGE 2
EDITORIAL
COMMITTEE LIST
PAGE 3
TOURNAMENTS FOR ALL
SWINDLE
CAISSA'S CHOSEN
BOOKCASE (P) REVIEW

PAGE 4
SWINDLE SOLUTION
GAMES
VULTURE GAME

EDITORIAL

A Brief Survey of Kingston Chess Club

The new member tried to conceal his perplexed expression as he watched two of the stronger players moving their pieces with a speed more appropriate to table tennis. The complicated position was inflicted with an assortment of designs and sizes of pawns, while the players were banging what could only be a double-faced Victorian clock. The board, which sloped from both sides to the middle would have put even Yeovil's notorious football pitch to shame.

He asked a nearby player some questions and received the reply, "That's called Five-Minute Chess. Yes we could do with some new equipment. If you hang around we may find you an opponent." The newcomer began to think that he had parted with his £3 membership fee rather foolishly.

At this point we leave our fictitious friend and apologise for the derogatory introduction-but it could have happened. Had he turned up on the night our first team met Richmond, he could have witnessed them start our clocks and wait ten minutes for our team to materialise for a home match. If people were punctual and everyone helped to set out the pieces, such occurrences could be avoided.

The membership of the club has doubled in little over a year. Gone are those cold monotonous evenings when three players clustered round a single board distracted only by the sonorous echo of the Bingo calls. We are situated in pleasant premises and as for the noise - the bar more than makes up for that.

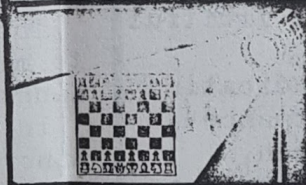
Is the club merely somewhere to play Chess? Each team seems to be an offshoot of the Club rather than an integral part of it. At present match results are buried under a voluminous avalanche

The magazine will now rectify this omission in internal communication.

There should be tournaments which really mean something in place of the various competitions scattered over the season. The Group Handicap for too long presented dull formulae which inhibited GOOD SERIOUS CHESS. Now we should welcome the flood of well planned competitions. These can be seen as the first step towards better things. A Five-Minute Chess Tournament could be run on the Swiss System. We might again hold lectures, I remember Mr. John Nunn's effort on the improbable topic 'Gambits in the Endgame' a few years ago turned out to be very worthwhile, and even probable.

Kingston is a good club in some respects but it could become a GREAT CLUB in all respects. The club is becoming better in many ways. The ability to play the game with success and enjoyment is growing. This is the message of the Kingston Gambit. One of the magazine's functions is to stimulate Chess for all Kingston & Thames Valley Chess Club members.

d.l. barasi



The following list of Committee members may be useful to the newer members.

PRESIDENT.....G.Roberts.
CHAIRMAN.....V.Z.McKeon.
SECRETARY.....P.I.Clemo.
TREASURER.....W.E.Waterton.

Team Captains:

A- M.J.Sheehan

B- W.H.Booth

C- P.I.Clemo

D- J.A.Fennessy

MEMBER WITHOUT PORTFOLIO..C.A.Russell

TOURNAMENTS FOR ALL

CLUB CHAMPIONSHIP - Open to selected players only.

ROSE BOWL - A Challengers' competition at present being run in two sections. The winner gains a place in the next years Championship.

NEWCOMERS TOURNAMENT - Also in two sections. This is a new event, helpful to new players lacking in Tournament experience and possibly to Captains who can evaluate new players more quickly.

JUNIOR COMPETITION - Another new event. The Summer Competition and the Group Handicap complete the list.

INTER-CLUB TEAM EVENTS.

Thames Valley League. We have teams in Divisions 1,3 & 4.

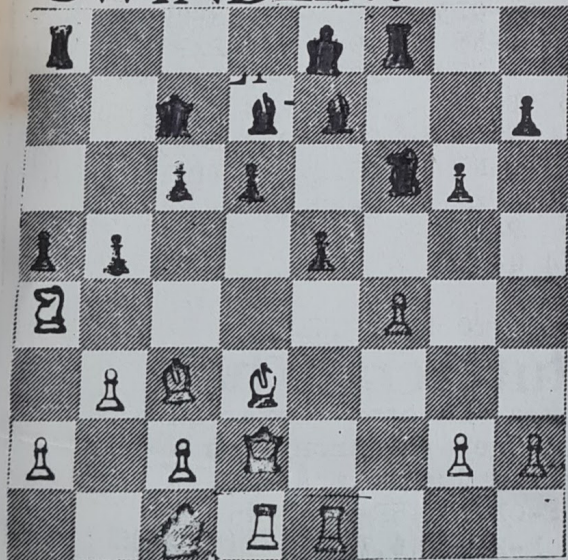
The Minor Trophy, Alexander Cup and Beauman Cup are also our targets.

The Silver Queen is awarded to the highest scorer in Team A.

FOR THE CHESSOPHRENIC

The Hammersmith Congress at Easter offers the \$120 First prize in the Open Swiss, Main Tournament Sections and Junior sections. In the Editor's view, Hammersmith is the Best Weekend event.

SWINDLE!!



Black is a little spare in the centre but his attacking pawns have netted White's Knight. Black to Move: What is the Huge Blunder which he makes and what are the moves that white plays.

PAR TIMES: 10 seconds - Novice,
3 minutes - Below Club Standard,
10 minutes - County player,
1 hour National player.

Swindle is a regular feature. Any positions containing a Blunder followed by a flashy win should be submitted to the Editor for this column.

CAISSA'S CHOSEN

HASTINGS HEROES. Mike Sheehan and James Pattle Shared third prize (both undefeated) in the Christmas Section B.

HIGH SPEED CHESS. The Kingston Team of J.Nunn, M. Sheehan, D. Stone and K. Inwood did quite well in the Richmond Lightning Tournament.

YOUNG LONDON. In the London Junior Championships G. Keane and C. Plasa both scored well.

THIS REMINDS ME OF ONE OF MY MUNICH GAMES. Oxford University (at 15) student John Nunn has made so many fine performances that if we were to list them all we would need a special issue. He has won London and British Junior Events, Hallsberg International Tourney, and played in the (More) recent Norwich Internat. Jun. Tourney., and the Munich International Team Youth Tournament and Board I for the England Glorney Cup team.

NO PROBLEM. "TED" Stevenson has delighted the Problem World for years with his compositions. Now he has promised to single out a few for the Gambit. The Club is proud to have a notable Problemist.

KEN Inwood, Ex-British Under 18 Champion is the Driver of the A Team. We wish to thank him for the use of his van. It is also RUMOURED that he is an Ex-Grand Prix Cyclist.

STONE ORIGINAL
CHAMPAGNE OR
GINGER WINE ?

The Erratic Genius David Stone Has failed to qualify from the Surrey Zone of the British Championship, despite being well prepared with original openings.

BOOKCASE REVIEW

IN THE NEXT FEW ISSUES of Gambit, some Personal reviews of Chess Books will appear. Short Offerings will be welcomed, if not printed.

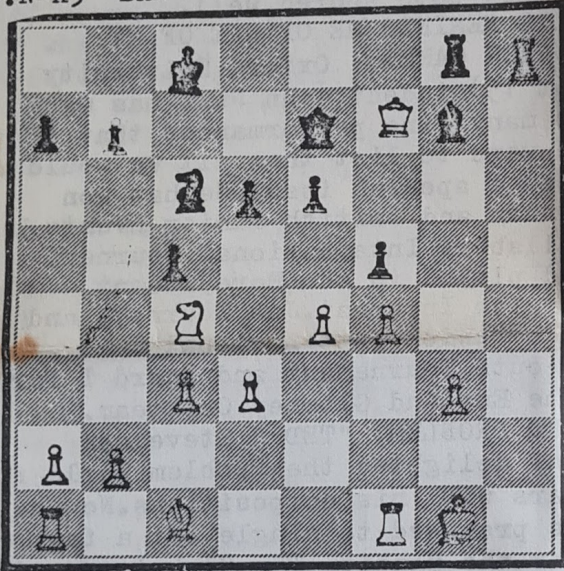
Swindle Solution

White must lose a knight as if it moves the Bishop is caught. Black finds instead; KPxP??? opening up the position. White shifts the queen from protecting Q3 with the Diversion Sacrifice N-N6

BLACK: M. LALLY.

KINGSTON A-Wimbledon

- | | | | |
|----------|-------|-----------|-------|
| 1. B-K4 | P-QB4 | 10. BxB | QxRP |
| 2. N-KB3 | N-QB3 | 11. P-KN3 | Q-K2 |
| 3. P-Q3 | P-KN3 | 12. N-B4 | N-B3 |
| 4. P-KR4 | P-KR4 | 13. P-B3 | N-KN5 |
| 5. B-K2 | B-N2 | 14. BxN | PxB |
| 6. N-B3 | P-Q3 | 15. QxP | O-O-O |
| 7. O-O | B-N5 | 16. P-B4 | P-B4 |
| 8. N-Q5 | P-K3 | 17. QxNP | QR-N1 |
| 9. N-K3 | BxN | 18. Q-B7 | B-Q5+ |



- | | | | |
|----------|--------|----------|-------|
| 19. PxB | RxP+ | 23. NxQ | NxQP |
| 20. K-B2 | KR-R7+ | 24. R-B2 | N-B7+ |
| 21. K-K1 | QxQ | | |
| 22. NxP+ | K-B2 | | |

Hastings Game

White: J.E. PATTLE Black: G.W. Bryan

- | | | | |
|----------|----------|-----------|------------------|
| 1. P-K4 | P-K3 | 17. B-N7 | R-KN1 |
| 2. P-Q4 | P-Q4 | 18. Q-B5+ | N-N3 |
| 3. P-K5 | P-QB4 | 19. B-B6 | P-KR3 |
| 4. P-QB3 | N-QB3 | 20. QxRP | N-B5 |
| 5. N-KB3 | Q-N3 | 21. P-N3 | N-N3 |
| 6. B-K2 | PxP | 22. P-QB4 | P-QN3 |
| 7. PxP | B-N5+ | 23. PxP | PxP |
| 8. N-B3 | P-KB3(?) | 24. QR-B1 | Q-N2 |
| 9. O-O | PxP | 25. P-K6 | N-K2 |
| 10. PxP | BxN | 26. N-B7 | Q-N1 |
| 11. PxB | Q-B2 | 27. B-K5 | R-N3 |
| 12. R-K1 | KN-K2 | 28. Q-R5 | |
| 13. B-Q3 | P-KN3 | | |
| 14. B-R6 | N-B4 | 29. RxR+ | BxR 33KN2 B-K4 |
| 15. BxN | NPxB | 30. P-B6 | RxP 34RRI Q-K1 |
| 16. N-N5 | N-K2 | 31. KN-K2 | K-N2 35NR5+ K-N3 |
| | | 32. K-B2 | QKR1 36NB4+ K-N4 |
| | | | 37 N-B6??? |

GAMES

SWINDLE SOLUTION CONTINUED

After QxN; BxNP+
K-Q1; RxB KxR; QxQP+
K-Q1; BxN+ 1-0.
After the Decoy Neddly
I believe all roads
lead to mate.

ALL GAMES/NEWS/CONTRIBUTION FOR GAMBIT-PUT IN ENVELOPE IN BOX OR GIVE DIRECT TO EDITOR. ESPECIALLY B & C MATCH GAMES.

CLUB CHAMPIONSHIP

White: J. PATTLE Black: M. SHEEHAN

- | | | | |
|-----------|-------|-----------|--------|
| 1. P-K4 | P-QB4 | 10. P-K5 | N-K1 |
| 2. P-QB3 | P-Q3 | 11. Q-Q2 | B-N5 |
| 3. P-Q4 | PxP | 12. P-KR3 | BxN |
| 4. PxP | N-KB3 | 13. BxB | P-K3 |
| 5. N-QB3 | P-KN3 | 14. R-K1 | P-QR3 |
| 6. N-B3 | B-N2 | 15. B-N5 | Q-N3 |
| 7. B-K2 | O-O | 16. QR-Q1 | Q-R2 |
| 8. O-O | N-B3 | 17. Q-B4 | P-R3 |
| 9. B-K3 | P-Q4 | 18. BxRP | BxB |
| | | 19. QxB | NxQP |
| 20. BxP | N-B4 | 21. Q-N5 | PxB |
| 22. NxP | P-QN4 | 23. P-KN4 | N/1-N2 |
| 24. N-B6+ | K-R1 | 25. PxN | NxP |
| 26. R-Q7 | Q-N3 | 27. R-K4 | K-N2 |
| 28. R-N4 | Q-K3 | 29. QxP+ | |

1 - 0

CLUB CHAMPIONSHIP

White: M. SHEEHAN Black: N. WILLIAMS

- | | | | |
|-----------|-------|-----------|-------|
| 1. P-K4 | N-KB3 | 14. N-N5 | Q-QB3 |
| 2. N-QB3 | P-Q4 | 15. B-KB4 | QxKP+ |
| 3. P-K5 | N-Q2 | 16. B-K5 | O-O-O |
| 4. P-Q4 | N-N3 | 17. NxP+ | K-N1 |
| 5. B-Q3 | N-QB3 | 18. N-N5 | R-Q2 |
| 6. B-K3 | N-N5 | 19. Q-R3 | PxP |
| 7. N-K2 | B-N5 | 20. O-O-O | Q-QB3 |
| 8. P-KB3 | B-R4 | 21. Q-R7+ | K-B1 |
| 9. N-B4 | NxB+ | 22. P-QR4 | R-Q3 |
| 10. QxN | B-N3 | 23. BxR | BPxB |
| 11. NxB | RPxN | 24. R-Q3 | |
| 12. P-K6 | P-KB4 | | 1 - 0 |
| 13. P-KN4 | Q-Q3 | | |

HOW NOT TO PLAY CHESS

'vulture'-crazy chess

Lost by a Kingston Player in a Match. He remains anonymous apparently due to modesty.

- | | | | |
|-----------|-------|-----------|--------------|
| 1. P-QB4 | P-QB4 | 15. P-B4 | N-N5 |
| 2. N-QB3 | N-KB3 | 16. BxN | PxB (MOVES |
| 3. P-KN3 | P-KN3 | 17. P-R5 | PxP (29-37 |
| 4. B-N2 | B-N2 | 18. RxP | Q-K1 (in Box |
| 5. P-Q3 | O-O | 19. KR-K2 | P+KR4 (other |
| 6. P-K4 | P-Q3 | 20. N-Q5 | R-B1 (Side) |
| 7. P-KR4 | N-QB3 | 21. P-B5 | N-Q5 |
| 8. B-N5 | N-N5 | 22. N-B4 | B-R5 |
| 9. P-B3 | P-B3 | 23. Q-N1 | R-B3 |
| 10. B-Q2 | N-K4 | 24. BxN | PxB |
| 11. B-K3 | N-N5 | 25. RxP | P-K3 |
| 12. B-B1 | B-Q2 | 26. Q-R2 | PxP |
| 13. P-QR3 | N-B3 | 27. P-B5+ | K-B1 |
| 14. B-R3 | P-B4 | 28. RxP | B-Q2 |