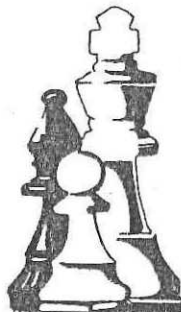
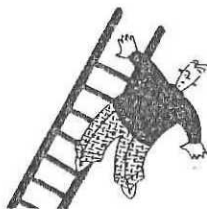


kingston chess 27



NOVEMBER 1988

Extracts from the Grading List



One important change has taken place this year: grading data over a three-year period are now used (where appropriate), unless 30 or more games have been played in a shorter period. This may have produced some unexpected results!

The symbols shown have the following meanings:

- A - 30 or more games graded in 1987-88
- B - at least 30 games graded in 1986-87 and 1987-88, of which at least 20 were played in 1987-88
- C - at least 30 games graded in 1985-86, 1986-87 and 1987-88, of which at least 10 were played in 1987-88
- D - at least 15 games graded in 1985-86, 1986-87 and 1987-88, of which at least 5 were played in 1987-88

(Clearly an A grade gives the most reliable guide to current playing strength, and a D grade is the least reliable.)

		1988 (1987)		1987 (1988)
	R. J. Banbury	A 144 (146)		A. Karel A 100 (102)
2	* J. W. Branford	B 199 (204)		A. C. Keats C 107 (111)
	P. O. C. Byrne	C 152 (157)	3	D. J. Mabbs B 191 (188)
	C. D. Carr	- (169)		S. Nagaratnam B 98 (104)
10	C. R. A. Clegg	A 162 (161)		I. W. O'Donnell D 131 (126)
	D. Coope	B 135 (124)		T. J. Quelch B 127 (133)
	T. J. Craig	C 111 (109)	5	# P. J. Roche B 185 (177)
	I. K. Cross	B 132 (140)	12	M. Sheehan B 160 (161)
	A. P. Cullen	C 203 (197)		D. L. Staples B 147 (141)
11	N. T. Davies	A 161 (156)		C. R. Timms B 145 (131)
9	P. J. Gibbons	B 166 (169)	4	S. G. Walker A 190 (175)
11	M. D. J. Groom	C 170 (164)		W. E. Waterton C 125 (119)
6	R. G. R. Harris	B 170 (161)		J. P. Wilkinson C 120 (123)
6	K. F. H. Inwood	B 168 (173)		E. J. Wilson D 87 (92)
8	C. J. Ison	C 115 (112)		



C. Bowley-P. J. Roche
Ellam Memorial, Round 3
24 September 1988

Sicilian Sveshnikov

1 e4 c5 2 Nf3 Nc6 3 d4 cd4 4 N:d4 Nf6 5 Nc3 e5 6 Ndb5 d6 7 Bg5 a6
8 Na3 b5 9 B:f6 gf6 10 Nd5 f5 11 Bd3 Be6 12 Ne3

Up to this point both sides had played at a gallop. However this move is not known to me, and was played presumably to get out of the books. Usually if White is going to put a knight on e3, he will play c3, Nc2 and Nce3
12...f4 13 Nf5 B:f5

Black must capture. Otherwise he may face one of the sacrificial lines based on N:b5 or B:b5, with the disadvantage of the knight placed on f5
14 ef5 Rg8

Maybe ...d5 first was better

15 Be4 Rc8 16 c3 Ne7 17 Bb7 N:f5!? 18 B:a6

White prefers to pick up a pawn or two on the queenside rather than win the exchange with B:c8, which is what I had expected. Black is hoping to crash through on the kingside

18...R:g2 19 B:b5+ Ke7 20 Qf3 Rg6 21 Nc2 Qb6 22 a4 Nh4 23 Qe2

On 23 Qh3 I was looking at the same sequence as was played in the game: 24 Kf1 Qb7 covering d7 and threatening ...Ne3+

23...Ng2+ 24 Kf1 Qb7 25 Rg1 Bh6!? 26 Ba5 Ne3+ 27 N:e3

Clearly not 27 fe3 as 27...Rg1+ 28 K:g1 Rg8+ wins easily

27...R:g1+

Later I thought of 27...Rcg8!? This is certainly good after:

(a) 28 B:b7 R:g1*

(b) 28 R:g6 Qh1+

(c) 28 Ng2 R:g2 29 R:g2 Q:g2+ 30 Ke1 Qg1+ 31 Kd2 f3+

(d) 28 Ng4 R:g4 29 Q:g4 (if 29 R:g4 Qh1+) 29...Q:a6+ 30 Qe2 R:g1+ winning the queen, but

(e) 28 Nf5+ Kd8 29 Ng3! seems to hold everything

28 K:g1 Rg8+ 29 Ng4 Qd7 30 f3 f5 31 h3 fg4 32 hg4 Bg5 33 Bb4 Qa7+ 34 Qf2

Qb7 35 Qc2 Rh8 36 Qf5 Bh4 37 Rf1 Bg3 38 Qg5+ Kf7 39 Bc4+ d5 40 Q:e5 dc4

41 Q:h8 Q:b2 42 Q:h7+ ♠-♠

Notes by Peter Roche

The J. E. Pattle Chess Auction

Jim Pattle, a Surrey stalwart, died of cancer in the autumn of 1987. He was known within a limited circle as a keen collector of chess books, though like many of his brethren, was not always keen to show them off to others. He was a man of some humour, so it was perhaps typical of such gatherings that the sale of his books at Phillips, New Bond Street,

London W1Y on January 21 turned into a sort of wake as old friends remembered him in a kindly way. "Didn't he win that ♙x17+ miniature at Paignton some fifteen years ago?". One of the jokes told was that he had many copies of Blackburne's *Best Games*, but was not keen to part with a single one. Ah, a true collector! We may not see his like again.

report

Ellam Memorial Trophy 1988
Quickplay
Saturday 24 September 1988

(Teams of four players; 30 minutes on the clock.)

This year seven teams entered, both Slough and Fulham sending two teams. The competition was run on jamboree lines, so that players within a team met players from different clubs within a given round. Players were drawn against each other along the principles of the Swiss system, but with the proviso that no two players from the same club were paired. Team totals were used to determine final placings.

Round 1

D.J.Mabbs	1	A.Shaw (NPL)	0
R.S.Scowen (NPL)	1	P.J.Roche	0
N.Johnson (Slough)	0	R.G.R.Harris	1
J.D.Llewellyn (Fulham)	1	C.R.A.Clegg	0

Round 2

D.J.Mabbs	0	A.P.Smith (Slough)	1
P.J.Roche	1	L.Lloyd (NPL)	0
S.F.Coles (NPL)	1	R.G.R.Harris	0
C.R.A.Clegg	1	D.K.Abiaw (Fulham)	0

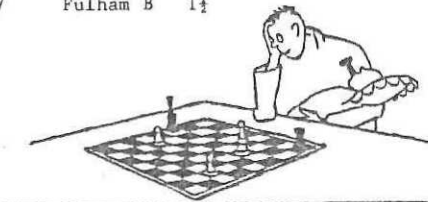
Round 3

D.J.Mabbs	0	C.Baker (Richmond)	1
C.Bowley (Slough)	$\frac{1}{2}$	P.J.Roche	$\frac{1}{2}$
D.K.Abiaw (Fulham)	0	R.G.R.Harris	1
G.Sherman (Fulham)	0	C.R.A.Clegg	1

Round 4

A.Fellerton	0	D.J.Mabbs	1
A.Shaw (NPL)	0	P.J.Roche	1
R.G.R.Harris	0	C.Bowley (Slough)	1
R.S.Scowen (NPL)	0	C.R.A.Clegg	1

Final positions	1	Slough	12 $\frac{1}{2}$
	2,3	Kingston	9 $\frac{1}{2}$
		Richmond	9 $\frac{1}{2}$
	4	Fulham	9
	5,6	Slough B	7
		NPL	7
	7	Fulham B	1 $\frac{1}{2}$



R.York - I.O'Donnell
Cobham v Kingston II, Board 4
Cen:enary Trophy 1988



Queen's Pawn

1 d4 d5 2 Nf3 Nf6 3 e3 Bg4 4 Nbd2 e6 5 Bd3 Nc6 6 h3 Bh5 7 g4 Bg6
8 Bb5 Bd6 9 Ne5 B:e5 10 de5 Nd7 11 B:c6 bc6 12 Nf3 Be4 13 Rg1
13:f3 14 Q:f3 N:e5 15 Qg3 Nc4 16 b3 Nd6 17 Bb2 f6 18 g5 Ne4 19 Qg4
Qe7 20 gf6 gf6 21 Qg7 Q:g7 22 R:g7 0-0-0 23 f3 Nd6 24 B:f6 Rdf8
25 Bd4 R:f3 26 Re7 Rhf8 27 R:h7 Rf1+ 28 Ke2 R8f2+ 29 Kd3 Ne4 30
R:f1 Re2 * 0-1

B.Owen - D.L.Staples
Kingston B v Pinner B, Board 4
Thames Valley League, Division 3
25 January 1988

Two Knights Defence

1 e4 e5 2 Bc4 Nf6 3 Nf3 Nc6 4 Ng5 d5 5 ed5 Na5 6 d3
(6 Bb5+ is more usual)
6...h6 7 Nf3 Bg4 8 h3 Bh5 9 g4 N:g4 10 hg4 B:g4 11 Qe2 Bd6 12 Bd2
N:c4 13 dc4 Qf6 14 Qe3 Q:f3 15 Q:f3 B:f3 16 Rh3 e4 17 Bc3 f6 18
Nd2 Bg4 19 Re3 0-0-0 20 R:e4 f5 21 Re6 f4 22 Rg6 Rhe8+ 23 Kf1
Be2+ 24 Kg2 f3+ 25 Kh3 Bc5 26 R:g7 B:f2 27 N:f3 Re3 28 Rf7 Rg8 29
Kh2 R:f3 30 Re7 Rf5 31 Re5 Bg3+ 0-1

W.E.Waterton - T.O.Bruggen
Kingston B v Wimbledon B, Board 6
Thames Valley League, Division 3
11 January 1988

English

1 e4 e5 2 Nc3 d6 3 g3 f5 4 Bg2 Nf6 5 d3 Be7 6 Qb3 c6 7 e3 Qc7 8
Nge1 Be6 9 Bd2 0-0 10 Rcl Nbd7 11 d4 Rab8 12 d5 Nc5 13 Qc2 Bd7 14
b4 Na6 15 a3 Rfc8 16 Qa2 Kh8 17 Qb1 Qd8 18 e4 g6 19 f4 cd5 20
N:d5 N:d5 21 ed5 Bf6 22 Qb3 Qe7 23 0-0 b6 24 Rfel Nc7 25 Nd4 Qg7
26 Nc5 Rb7 27 fe5 de5 28 N:e5 B:e5 29 R:e5 Ne8 30 Bc3 Nf6 31 d6
Rbb3 32 Re7 1-0

A game by one of our new members!

Surrey Individual Championship: Felce Cup
Wimbledon
1 August 1988

D.Clopp-T.Bruggen

English

1 e4 e5 2 Nc3 d6 3 Nf3 f5 4 d3 Nf6 5 g3 Nc6 6 Bg2 Be7 7 0-0 0-0
8 a3 Qe8 9 b4 a6 10 Bb2 Qh5 11 e3 g5 12 h3 Kf7? 13 Nd5 N:d5?
14 N:e5+ N:e5 15 Q:h5+ 1-0