

Kingston Chess Club Bulletin 16

April 1987

OBITUARY

E.Stevenson, President

Ted Stevenson first joined Kingston Chess Club in 1936. He remained a member until 1940, when his disability made it difficult for him to attend Club meetings during the war. He rejoined the Club in 1955. Ted devoted a great deal of time to chess problems during this period. He was a prominent member of the Chess Problem Society, and had many of his compositions published. He also assisted Leonard Barden with his chess column.

At one stage Ted was one of the strongest players in the Club, often playing Board 2 or 3 in the Surrey Trophy or Thames Valley Division 1 team. He was always a keen supporter of Club competitions, and a regular member of the Club committee. He was made an Honorary Life Member in 1972, when he became Vice-President. He became President of the Club in 1975.

Ted was the last link with the pre-war Club. His cheerful disposition will be sadly missed by all, particularly those who had known him for many years. The Chairman has written to Ted's relatives, expressing condolences on behalf of the Club. They have replied, acknowledging the pleasure Ted derived from the Club and the friendship of all the members.

W.E.Waterton

RESULTS⁰⁰⁰

Thames Valley League, Division 1 16 December 1986

Slough A 3.5-4.5 Kingston A

C. Frostick	1-0	K. Inwood
A. Robbins	1-0	P. Roche
M. Trent	1/2-1/2	D. Mabbs
H. Frostick	0-1	C. Clegg
R. Fox	0-1	C. Carr
E. Bramley	1/2-1/2	R. G. R. Harris
B. Atkinson	1/2-1/2	P. Gibbons
A. Dunlop	0-1	M. Sheehan

26 January 1987

Kingston A 2.5-3.5 Richmond A

P. Roche	0-1	J. C. Benjamin
K. Inwood	adj	G. Wall
C. Clegg	1/2-1/2	D. J. Stewardson
D. Mabbs	1/2-1/2	A. Berry
P. Gibbons	1-0	K. I. Norman
R. G. R. Harris	0-1	J. McCarthy
C. Carr	1/2-1/2	C. B. Baker
M. Sheehan	adj	R. James

3 November 1986

Hounslow 2.5-5.5 Kingston A

Details of opponents are unavailable.
Individual results were:

M. Groom 0, D. Mabbs 1/2, C. Clegg 1, C. Carr 1/2,
R. G. R. Harris 1, P. O. C. Byrne 1, M. Sheehan 1,
J. E. Pattie 1/2.

A former member of the Kingston Chess Club (in the late 1930's) would appreciate it if any present member could visit him to play the occasional game of chess. He is unable to get to the Club because he suffers from arthritis. He estimates his playing strength as approx. 120 BCF.

Please contact Mr Crick, 25 Durston Road, Kingston
(Telephone 546 0449)

Thames Valley League, Division 4 10 February 1987

Slough C 4.5-1.5 Kingston C

M. Ediker	1-0	T. Quelch
G. Brown	1/2-1/2	C. J. Ison
R. Jeffrey	1-0	R. N. Ellis
D. Webb	0-1	S. Nagaratnam
L. Bosbach	1-0	A. Karel
A. W. Smith	1-0	(default)

23 February 1987

Kingston C 0-5 Maidenhead C

T. Quelch	0-1	C. Haywood
C. J. Ison	adj	C. Callow
R. N. Ellis	0-1	A. Robins
S. Nagaratnam	0-1	P. Johnson
A. Karel	0-1	K. Trower
B. Gale	0-1	F. Archer

2 March 1987

Kingston C 0.5-5.5 Wimbledon B

T. Quelch	0-1	P. Terry
C. J. Ison	0-1	S. T. K. Wilkinson
J. Grant	0-1	D. Careswell
R. N. Ellis	0-1	K. Wilsoncroft
S. Nagaratnam	0-1	D. Payne
A. Karel	1/2-1/2	B. Lyons

Thames Valley League, Division 1 7 January 1987

Pinner A 2-3 Kingston A

D. Watts	1-0	K. Inwood
A. Stone	1/2-1/2	M. Groom
I. Salisbury	adj	C. Clegg
N. Chan	0-1	P. Roche
C. Duncan	adj	D. Mabbs
M. Simmons	0-1	R. G. R. Harris
G. White	adj	M. Sheehan
P. Barker	1/2-1/2	C. Carr

23 January 1987

Fulham A 4.5-3.5 Kingston A

A. Summerscale	1-0	P. Roche
C. Blackwell	1/2-1/2	K. Inwood
J. D. Llewellyn	1/2-1/2	C. Clegg
M. Brougham	1/2-1/2	M. Groom
L. Faizi	0-1	D. Mabbs
A. Donkin	1-0	C. Carr
D. Ball	0-1	R. G. R. Harris
C. K. Smith	1-0	(default)

Thames Valley League, Division 4 1 December 1986

Hammersmith 4.5-1.5 Kingston C

P. B. Sergeant	1-0	W. E. Waterton
J. Mulcahy	1/2-1/2	T. Quelch
P. S. Morton	1-0	M. Wood
P. Martin	1-0	C. J. Ison
J. White	1-0	S. Nagaratnam
H. M. Lawrence	0-1	R. N. Ellis

8 December 1986

Kingston C 2-4 Pinner B

(default)	0-1	M. A. Shaw
T. Quelch	0-1	G. J. Haslinger
M. Wood	1-0	J. M. Haslinger
C. J. Ison	1/2-1/2	C. Haslinger
S. Nagaratnam	1/2-1/2	S. P. Short
R. N. Ellis	0-1	B. R. T. Owen

16 December 1986

Maidenhead C 3.5-2.5 Kingston C

C. T. Callow	1-0	W. E. Waterton
A. S. Robins	0-1	T. Quelch
G. Robins	0-1	C. J. Ison
P. Johnson	1-0	S. Nagaratnam
A. Challinger	1/2-1/2	R. N. Ellis
K. Trower	1-0	A. Karel

12 January 1987

Richmond C 2-4 Kingston C

C. R. Timms	1/2-1/2	W. E. Waterton
K. I. Milne	0-1	T. Quelch
H. McWaters	0-1	C. J. Ison
G. Williams	1-0	S. Nagaratnam
N. Smith	0-1	R. N. Ellis
G. Gibson	1/2-1/2	A. Karel

19 January 1987

Kingston C 0.5-5.5 Hampton

T. Quelch	0-1	P. Gilbert
W. E. Waterton	0-1	R. L. Pettit
C. J. Ison	0-1	M. R. Lee
R. N. Ellis	0-1	A. A. Richards
B. Gale	0-1	C. I. Lambe
A. Karel	1/2-1/2	S. Martin

COMMENT

Regular readers of "Chess" will have seen extensive correspondence recently on the problems of maintaining a viable chess club. A letter from the Secretary of Luton Chess Club obviously struck a chord. Here is part of the letter that set the ball rolling in May 1986:

"...I took over the running of our club at the start of the season. The outgoing secretary decided to hand over the reins to two enthusiasts who were not jaded by 11 years of continuous uphill struggle to run a chess club. It is only in hindsight that we realise the lonely path our former secretary trod in the face of general apathy amongst the majority of our members.

In our first season we... changed the annual club championship to a seven-round Swiss (and)...started a ladder tourney to encourage every game played at the club to be a competitive one. It is a continuous fight to get people to play in these tourneys;...members (especially the stronger players) only use the club for league matches, and do not seem to take much interest in club activities...it seems it is more attractive to stay at home on a winter's night and read a chess book..."

In June, the President of Southampton Chess Club suggested a club championship where to qualify for a prize a member must play eight or more games against six or more opponents:

"...Nobody is put off by the necessity to attend on any particular evening or even for a number of weeks. Because of the lack of prior commitment, members are never reluctant to enter and because all results qualify for Union and BCF gradings, we have nobody 'lurking in the shadows' who might have a grade (sometimes a good one), but cannot fit in enough qualifying games. Very few of our members fail to play at least a dozen championship games in a season..."

In July, sponsorships and advertising were suggested:

"...Great Yarmouth Chess Club came to an arrangement with a local casino to use their top-floor room once a week. The casino provided coffee and sandwiches every club night for free (and) bought new wooden sets and boards...What they got out of it was increased publicity, all good, through having a very successful chess team (and) their name became known throughout East Anglia..."

Encourage juniors and others to join by advertising (this will certainly please your sponsor), and do play the occasional simul. against an IM or GM. This is a valuable way of creating interest...By inviting the local press to cover the event you can get a lot of mileage from a simul....Weekend tournaments organised by your club are again excellent for creating interest in the club. These don't have to be big open events, but can be limited to invited players from surrounding clubs. Great financial resources aren't as important as enthusiasm and organisation..."

The Secretary of Cardiff Chess Club wrote:

"...Don't be tempted by offers of cheap rooms in pubs or clubs...The disadvantage of pubs is that they tend to deter juniors (or rather their mums!). We have recently moved to the YMCA where we have been made very welcome. Most towns have a YMCA..."

Publicity: make sure the central library knows your venue, club night and telephone number of a club official. We have obtained several new members this way. Also explore local free newspapers. In our case Cardiff City Council produce a regular free 'What's On' news-sheet and includes us for no charge..."

Finally, from Hemel Hempstead:

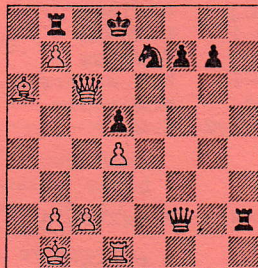
"...Publicity comes from local papers only for outstanding events. Two Junior Tournaments in the Christmas holidays got excellent write-ups...Good congress wins also get write-ups..."

Club congresses are one idea. Sponsors (are) essential. Estate agents, accountants, banks, rich local firms (are) worth a try...

Following the BCF's urge to popularise chess...(just before the World Championship), tables and chess sets were set up adjoining the Public Library lawn...and an open invitation issued to the public to come and play our members. This had been announced in the local press in good time. It was well supported by young and old..."

Clearly, Kingston Chess Club is not alone in the problems it faces. But are solutions to be found in these letters?

APRIL FOOL PROBLEM



White to play and mate in one!

(Think about it!)