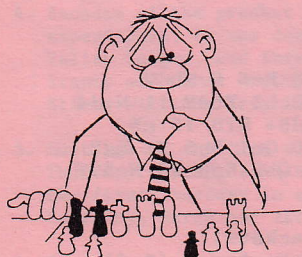


Kingston Chess Club Bulletin

II



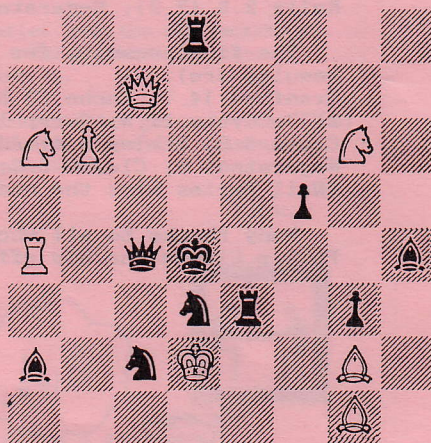
October 1986

PROBLEMS...

Observer 2 February 1958
E. Stevenson

Mate in 2 8 v 10

(3r4/2Q5/NP4N1/5p2/Rlqk3b/3nrlp1/blnK2B1/6B1)

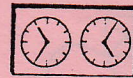


No.10 Solution

(1K2n2q/1N4p1/pk5P/2p3P1/P3P3/N7/2P5/8
White to play and win)

1 Nc4+ Kc6 2 Nd8+ Kd7 3 Ne5+ K:d8 4 Nf7+ Ke7 5 N:h8 gh6
6 gh6 Kf6 7 e5+ K:e5 8 Ng6+ Kf6 9 h7 wins

(If Black tries 4...Kd7 5 N:h8 gh6 6 gh6 Nf6 7 e5 Nh7
8 Ng6 wins because the Black knight is tied down by the
h-pawn, and White can use K + N against K.)



TEBB MEMORIAL TROPHY

The final round of the competition took place on Monday 1 September, with a rather disappointing turnout of 10 members. A 9-round all-play-all was played, with final results converted into a score out of 8.

Messrs Roche, Byrne and Davies were well ahead of the rest of the field throughout. Neil Davies lost to both Peter Roche and Patrick Byrne, but scored consistently against everyone else. Patrick beat Peter in their individual encounter, but surprisingly lost two other games. Peter dropped his only half point to me when we noticed that both flags had fallen. The clocks showed the identical position in my game against Patrick, but with a very different outcome!

Wilkinson-Byrne

Albin

1 d4 d5 2 c4 e5 3 de5 d4 4 Nf3 Nc6 5 g3 Be6 6 Nbd2
Bb4 7 b3? Bc3 8 Rb1 Bf5 9 Rb2 B:b2 10 B:b2 Nb4? 11 N:d4
Bg6 12 a3 Na6 13 b4 c5 14 Nb5 cb4 15 Nd6+ Kf8 16 c5
N:c5 17 ab4 Nd6 18 Ba3 Ne7 19 b5 Qa5 20 Qc1 Bh5 21 Bg2
Rb8 22 Kf1 Nd4 23 e3 Ne2 24 Nb3 Qa4 25 Qb2 Kg8 26 Nc5??
Qd1 # 0-1

The results were (score out of 8 in brackets):

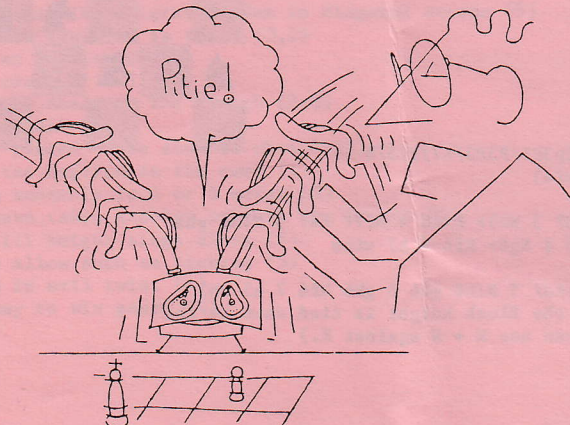
Roche 7.5 (6.5); Byrne, Davies 7 (6.2); Waterton 5 (4.4);
Wilkinson 4 (3.6); Cross, Ellis 3.5 (3.1); Clemow 3 (2.7);
Kelly 2.5 (2.2); Nagaratnam 2 (1.8).

The final results for the tournament as a whole (best two results are):

Branford 14.7; Roche 13.5; Byrne 12.2; Harris 11.9; Davies 11.7; Groom 11.5; Carr, Inwood 10; Staples 9.5; Waterton 8.9; Cross 8.8; Webley 8.4; Adams 8; Wilkinson 7.6; Ellis 7.1; Nagaratnam 6; Clemow 5.2; Karel 4.5; Kelly 4.2.
(Neil Davies wins the under-140 grading prize.)

Many thanks to all who took part, and special thanks to Philip Clemow for his efficient organisation of the series.

J.P.W.



NOTES FROM THE A.G.M.



1. The meeting was held on 29 September 1986 at 8.00 pm.
2. Tebb Memorial Trophy. The total collected in entry fees was £66. Of this, £33 is to be returned as prizes.
First prize £11 J.Branford
Second prize £8 P.Roche
Third prize £5 P.Byrne
Grading prize £9 N.Davies
3. Several players have resigned from the Club, including P.Clemow, N.Doe, I.Hopkinson, B.Whyte, D.Best.
4. Because of the present reduced membership, and in an attempt to reduce expenditure, it was decided that three teams would be run in the Thames Valley League, and three in Surrey competitions (Surrey Trophy, Centenary Trophy and Minor Trophy). No teams will be entered in the Stoneleigh or Ellery Williams Trophies, nor in the National Club competitions.
5. Meetings of the Club will now take place every Monday and every fourth Thursday (except Bank Holidays). Thursday meetings will be reduced to only the first Thursday in each month, (ie October, November, December, February, March and April).
6. The annual subscription is to remain at £20 if paid before the end of October. If paid later, the subscription is £22.
7. Richard Ellis is the new Treasurer, and Charles Ison the new Secretary. Other posts remain as last year: President - Ted Stevenson, Vice-President - Ken Inwood, Chairman - Bill Waterton.
8. The Silver Queen (for the best score in representative games for the Club) was awarded to D.Best, who achieved over 80% over the whole season. P.Gibbons came a close second, again with over 80%.

J.P.W.



Streatham Quickplay, September 1986

L.Pinto (185) - D.Rowson

King's Gambit

1 e4 e5 2 f4 Bc5 3 Nf3 d6 4 Bc4 Nf6 5 d3 Nc6 6 Nc3 a6 7 f5 h6 8 Qe2
0-0 9 Be3 Nd4! 10 Qd2? N:c2+ 11 Q:c2 B:e3 12 Qe2 Ba7 13 0-0-0 b5
14 Bb3 Bb7 15 h3 b4 16 Nd5 N:d5 17 ed5 c6 18 d4 cd5 19 de5 de5 20 g4
e4 21 Nd4 Rc8+ 22 Kbl Qf6 23 Qe3 Rfd8 24 h4 Rc4!? 25 B:c4 dc4 26 g5
Qe5? 27 Nf3 R:d1+ 28 R:d1 Qf5 29 Nd4 Qa5 30 gh6 b3 31 a3 c3 32 Qc3
Qh5 33 Qb3 Bd5 34 Qc2 e3 35 hg7 Be4 ...(0-1)

Crossword

ACROSS

- 1 Push along adjacent kingside files, and castle? (6)
- 5 A rook caught shaking in polar region (6)
- 8 GM left his French knight in trouble (8)
- 9 To move as knight does - in dire straits? (4)
- 10 Not a mount for a knight - one for two knights! (3)
- 12 Repeat irregular English opening? Sure! (2-3)
- 15 Girl gets draw in French (3)
- 17 Number of players needed to gain White (3)
- 18 'Chess is a --- in which an elephant may bathe...' (3)
- 19 Endless match? That's right! (3)
- 20 Starts the game...or events (5)
- 21 Successful conclusion of game (3)
- 23 Box from which a rook and king emerge (3)
- 24 Tactical device for holding on! (3)
- 26 Clever. Take a queen, but with regret (5)
- 29 Put German knight on it (3)
- 33 Miss the king in drink (4)
- 34 Obvious mate: White takes bishop (8)
- 35 Punish English opening in the way (6)
- 36 Take time out in Spanish! (6)

DOWN

- 2 French bishops? (5)
- 3 Chooses to stop amid complications (4)
- 4 Inclination of knight in gallery? (5)
- 5 A French knight? He's in pain (5)
- 6 Half a German defence! (4)
- 7 Where chess had its origins hidden in diagonal action (5)
- 10 Notice one is queen up in total (3,2)
- 11 In haste, an English GM (5)
- 12 Birds and castles? (5)
- 13 Invert piece? Ahead at the finish (2-3)
- 14 Try composition? (5)
- 15 Very minor pieces - the soul of chess? (5)
- 16 Belief in the English in the camp (5)
- 25 GM can win suddenly in 4 or 5 moves (5)
- 27 Fruit? A pawn takes another pawn in the French (5)
- 28 Confused till knight sings along (5)
- 30 Not out to allow such an opening (5)
- 31 Win a pawn in evil twist (4)
- 32 Friendly way to win game? (4)

